

Spare parts list

Brand: Dimplex

Type: LIK 8TES

Part number: 366030

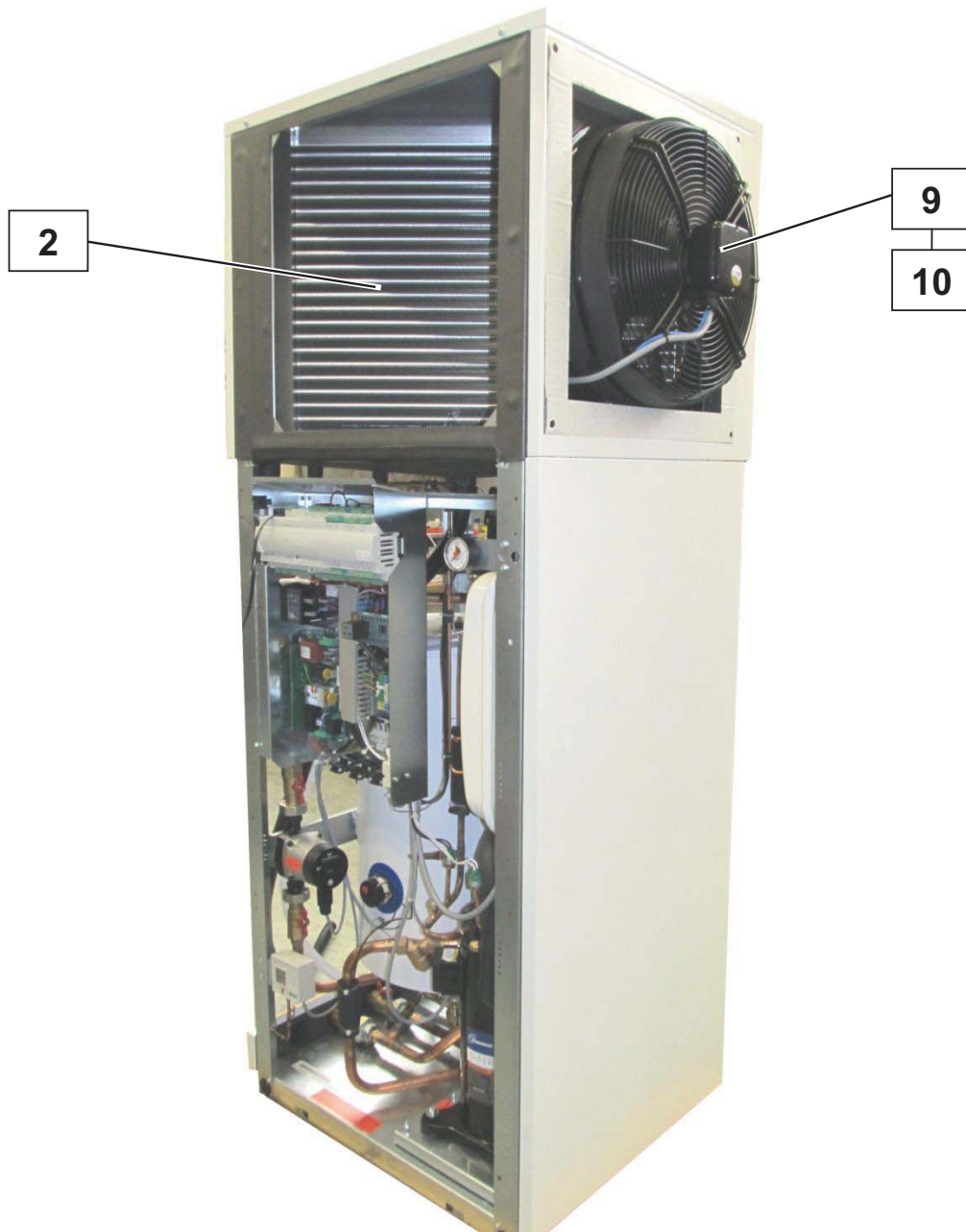
Position	Description	Part number	Serv. ind.
1	Compressor	4522354115	
2	Evaporator	4521612802	
3	Expansion valve	4521614106	
4	Inspection window	4522354136*	
5	Filter dryer	4522254117E	
6	Check valve	4521574162E	
7	Plate heat exchanger	4521604133	
8	Insulation for plate heat exchanger	4521602335	
9	Ventilator	4521614105	
10	Band heater 13.05m	4521492805E	
11	Four-way valve	4521634151	
12	Magnetic coil	4521634152	
13	Schrader valve insert	4518044288E	
14	Sealing cap	4525014209E	
15	Cap nut	4521224113E	
16	Expansion vessel 24 l	4521584123E	
17	Diaphragm safety valve	4522254221E	
18	Pump, electronically regulated	4521614112	
18.1	Pump plug	4521624104	
19	Cylinder 50 l	4521612805	
20	Electric radiator 2 kW	4521614113	
21	Safety temperature limiter	4521614114	
22	Overflow valve	4521574167E	
23	Ball valve 1" no gravity control	4521574165E	
24	Ball valve 1" with gravity control	4521574166E	
25	Filling and drain cock	4541014112	
26	Dirt trap 3/4"	4518034789	
26.1	Filter for dirt trap 3/4"	4518094443	
27	Flow rate switch	4521634161	
28	Defrost end pressure switch	4521614103	
29	High-pressure switch	4522344220	
30	Low-pressure switch	4521603041	
31	Cap valve	4522254152	
32	Rubber cushion	4521604124E	
33	Transformer	4521154147E	
34	Controller without display	4522328503E	
35	Contactator	4518094262	
36	Auxiliary switch	4518094206	
37	Socket	4521374112E	
38	Relay	4516014126E	
39	Retaining clip	4522254246E	
40	Disconnect terminal block	4522304159	

Position	Description	Part number	Serv. ind.
41	Disconnect terminal block	4522304160	
42	Fuse holder	4522304121E	
43	Fuse	4518034158E	
44	Duo feed-through terminal block (4 way)	4522304154	
45	Duo feed-through terminal block (4 way)	4522304156	
46	Dual feed-through terminal (4 way)	4522304155	
47	Capillary tube controller 137 °C	4522354121	
48	Terminal strip	4501194106	
49	Terminal strip	4537504101	
50	Soft starter	4522304164E*	
51	Sensor	4522314115E	
52	Temperature sensor with casing	4521144180E	
53	Strain relief	4501194101E	
54	Clip-on nut	4521574104E	
55	Insulation wall connection	4521612012	
56	Condensate hose + pipe unions	4521598502	
57	Quick connector	4521574103E	
58	Retaining ring	4521574106E	
59	Pressure gauge	4521584124E	
60	Control panel with GDD keypad	4522302834E	
61	Connecting cable remote control 1.5m	4522302832E	
62	Upper front cover	4521602305E*	
63	Lower front cover	4521602306E*	
64	Panelling cover white	4521603554E	
65	Upper front panel white	4521603555E	
66	Upper back panel white	4521603556E	
67	Upper left side panel white	4521603557E	
68	Upper right side panel white	4521603558E	
69	Lower front panel white	4521603559E	
70	Lower back panel white	4521603560E	
71	Lower left side panel white	4521603561E	
72	Lower right side panel white	4521603562E	
73	Lower tubular feedthrough white	4521603563E	

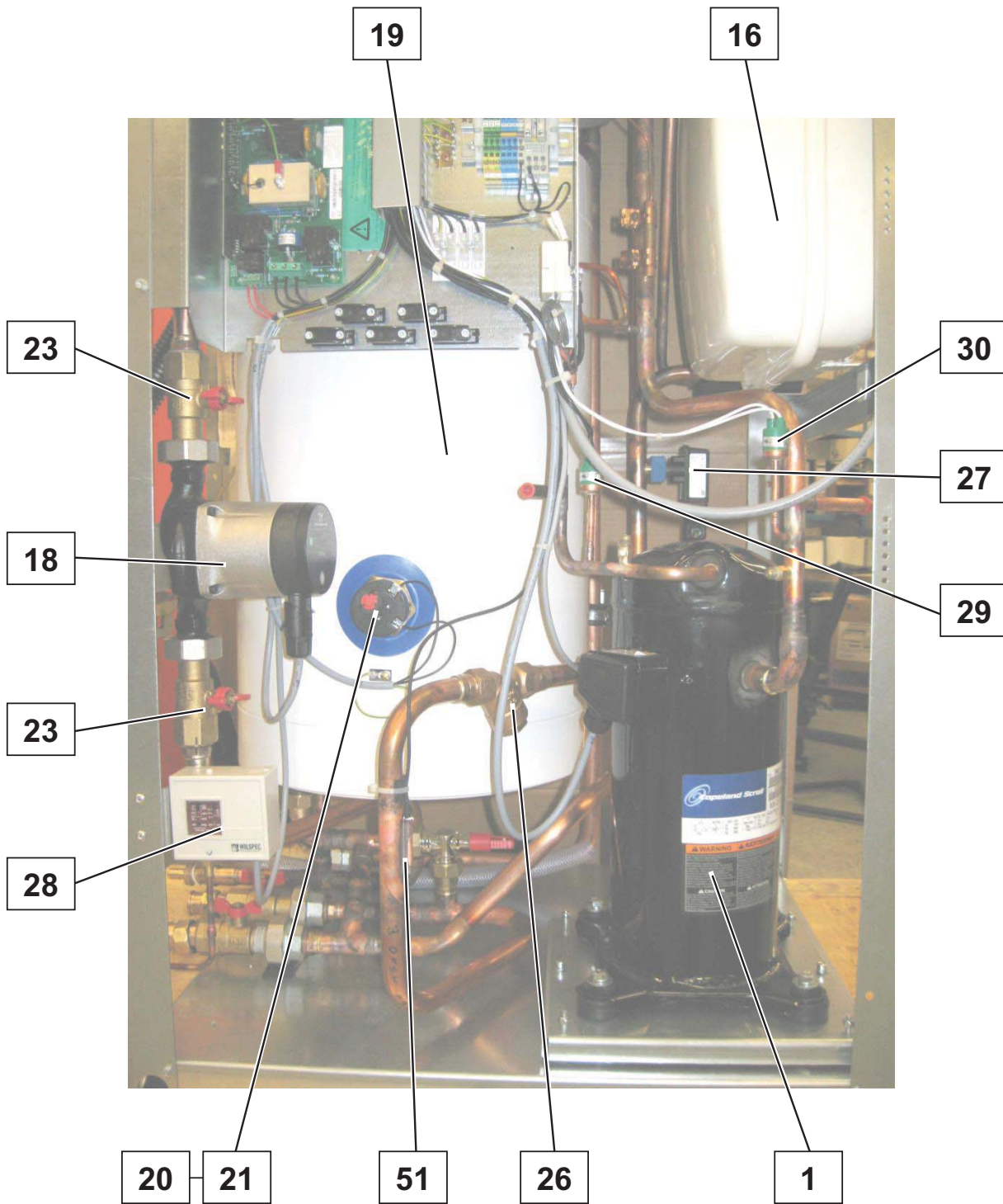
* The article number corresponds to an alternative component, the original component is no longer available.

X.1: Component of a spare part

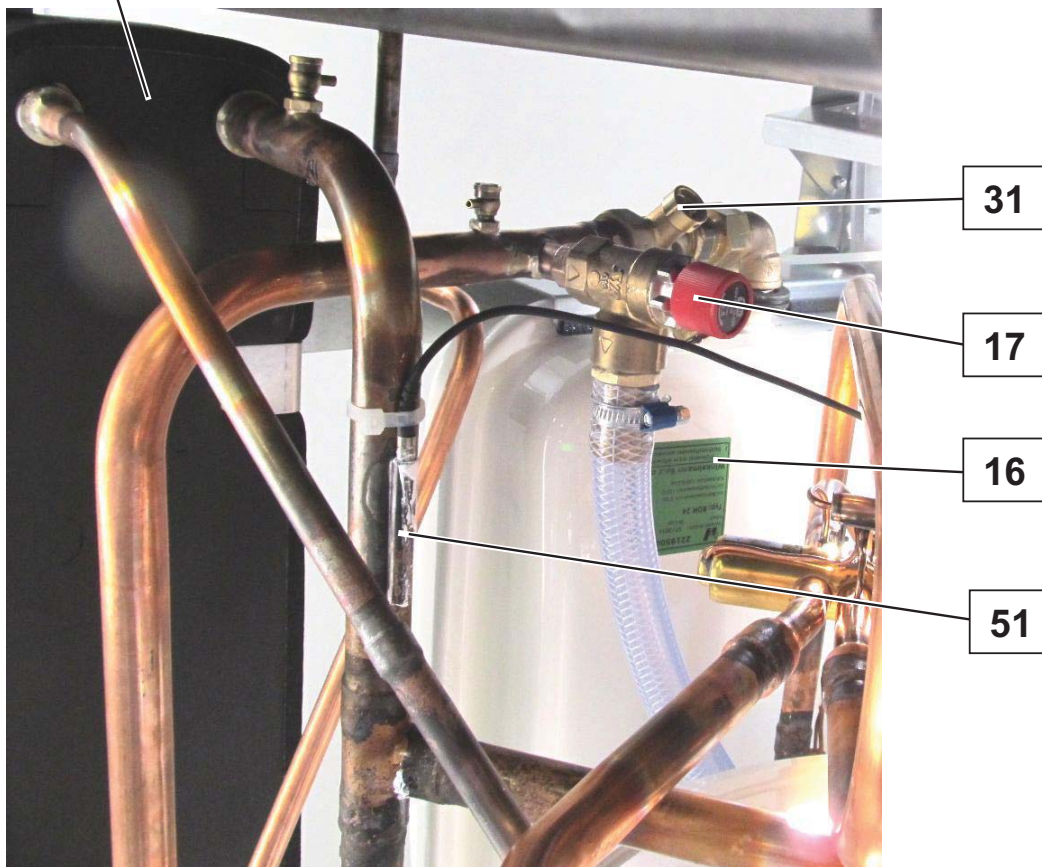
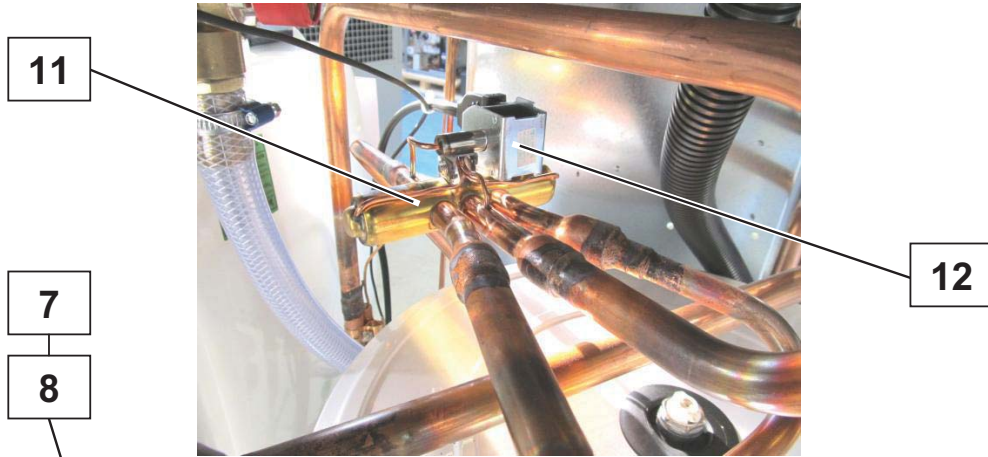
Note: The filter drier must always be exchanged when soldering work is carried out in the refrigerant circuit.



Images are intended for identifying the item in the spare parts list and may differ from the actual technical design.



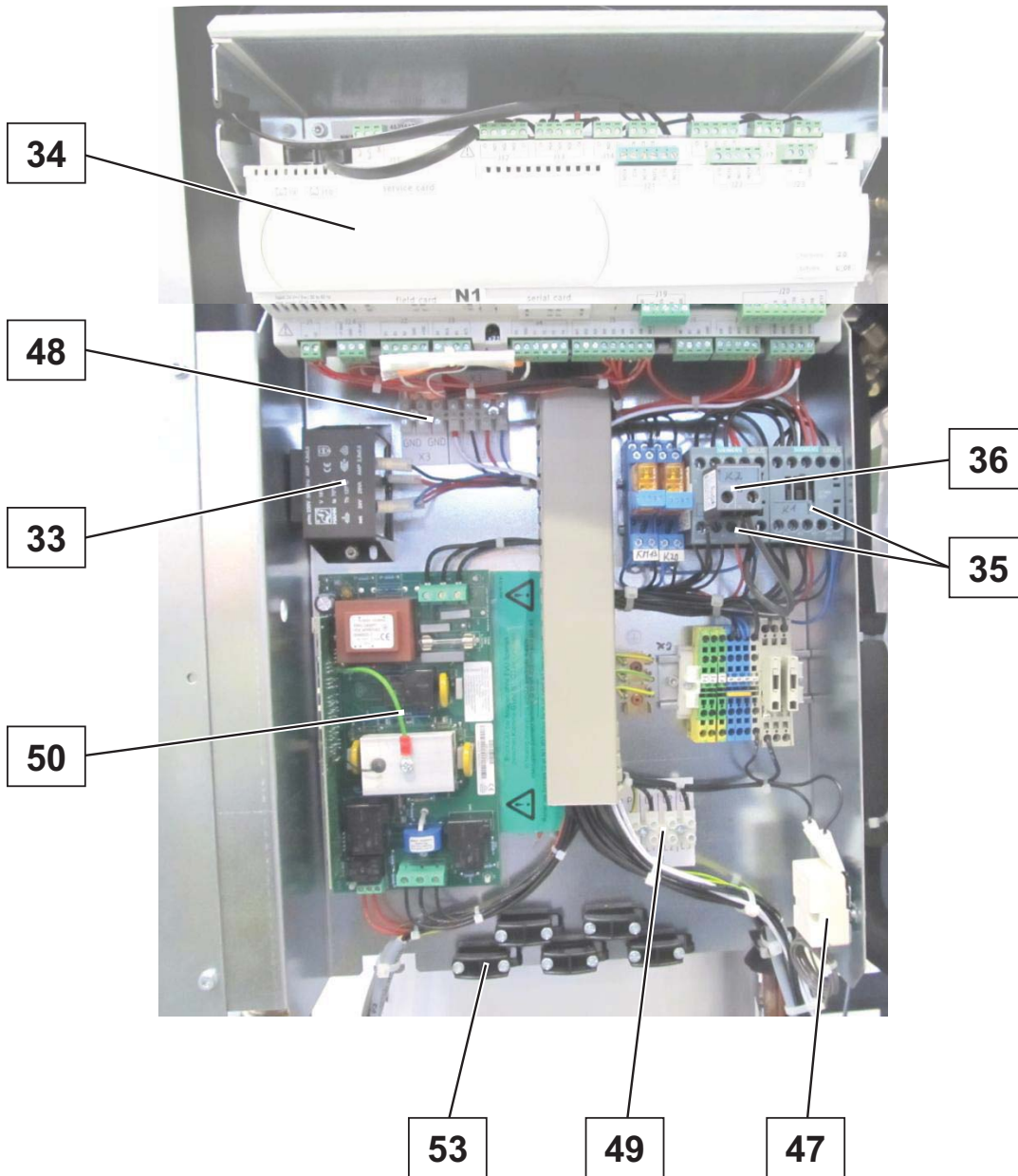
Images are intended for identifying the item in the spare parts list and may differ from the actual technical design.



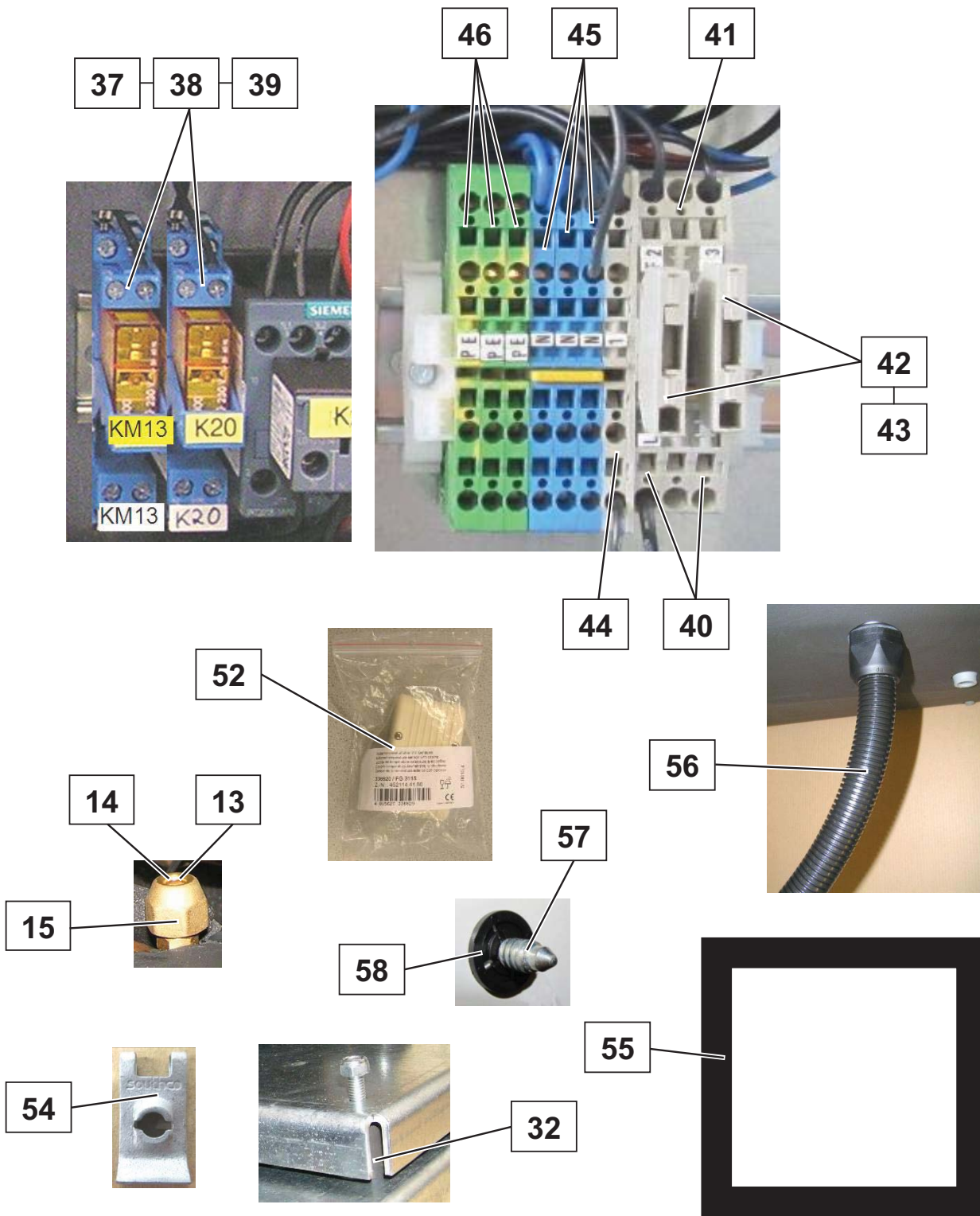
Images are intended for identifying the item in the spare parts list and may differ from the actual technical design.



Images are intended for identifying the item in the spare parts list and may differ from the actual technical design.



Images are intended for identifying the item in the spare parts list and may differ from the actual technical design.



Images are intended for identifying the item in the spare parts list and may differ from the actual technical design.



Images are intended for identifying the item in the spare parts list and may differ from the actual technical design.