

Spare parts list

Brand: Dimplex

Type: LI 11TES

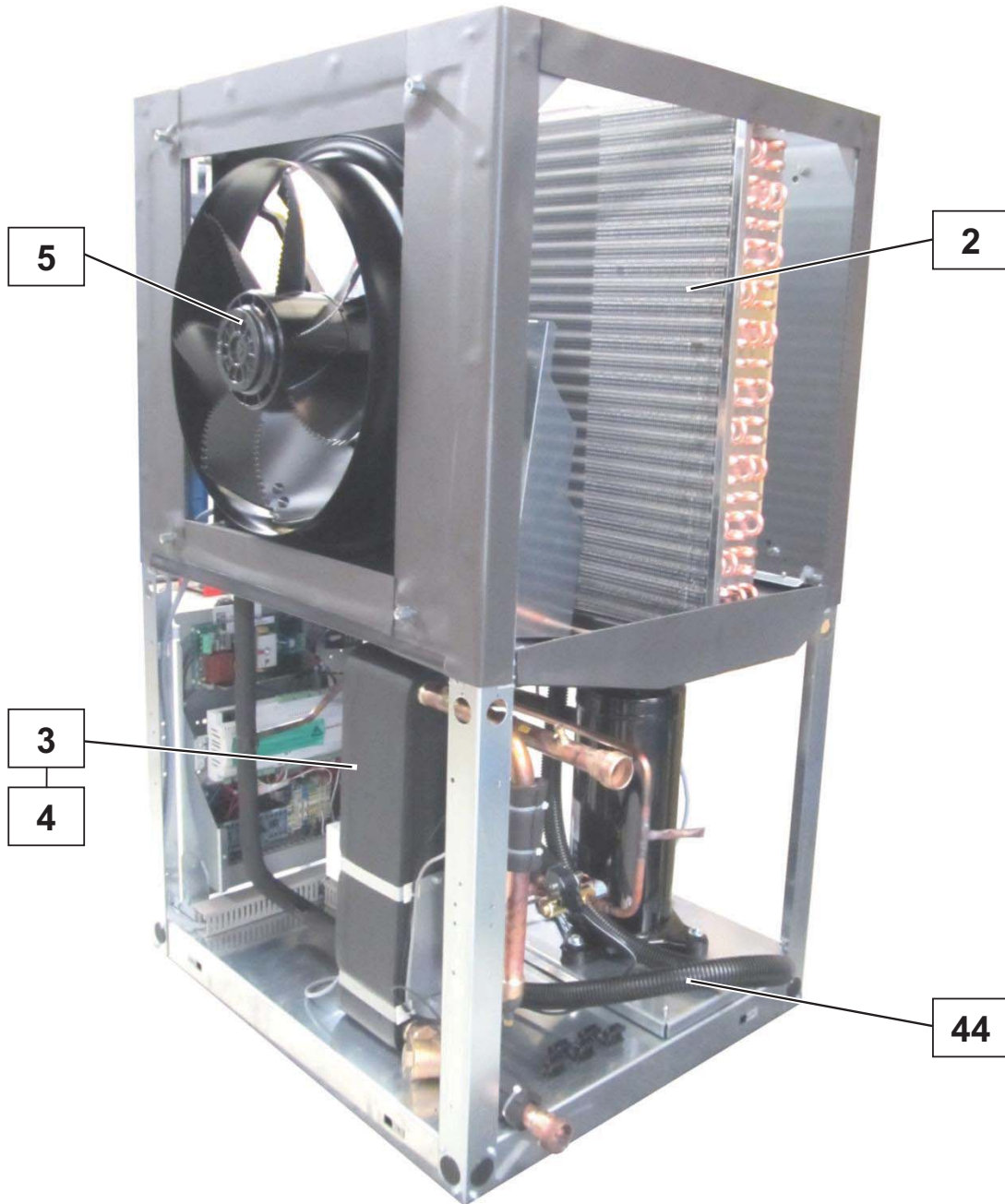
Part number: 366050

Position	Description	Part number	Serv. ind.
1	Compressor	4522354116	
2	Evaporator	4521612801	
3	Plate heat exchanger	4522254174E	
4	Insulation for liquefier	4522252069E	
5	Ventilator	4521614101	
6	Expansion valve	4521614102	
7	Four-way valve	4521634151	
8	Magnetic coil	4521634152	
9	Filter dryer	4518034248E	
10	Check valve	4521574162E	
11	Check valve	4521584106E	
12	Inspection window	4522354136*	
13	High-pressure switch	4522344220	
14	Low-pressure switch	4521603041	
15	Defrost end pressure switch	4521614103	
16	Dirt trap 1"	4522254155	
17	Flow rate switch	4521614104	
18	Rubber cushion	4521604124E	
19	Schrader valve insert	4518044288E	
20	Sealing cap	4525014209E	
21	Cap nut	4521224113E	
22	Electric radiator 6kW complete	4521612806	
23	Transformer	4521154147E	
24	Safety temperature limiter	4519012812E	
25	Capillary tube controller 137 °C	4522354121	
26	Soft starter	4522304164E*	
27	Terminal strip	4537504101	
28	Controller without display	4522328503E	
29	Contacteur	4518094285	
30	Auxiliary switch	4518094206	
31	Tier terminal	4521604126	
32	Tier terminal - protective conductor	4521604127	
33	Disconnect terminal block	4522304159	
34	Disconnect terminal block	4522304160	
35	Fuse holder	4522304121E	
36	Fuse	4518034158E	
37	Duo feed-through terminal block (4 way)	4522304154	
38	Duo feed-through terminal block (4 way)	4522304156	
39	Dual feed-through terminal (4 way)	4522304155	
40	Temperature sensor NTC-10	4522314135E	
41	Strain relief	4501194101E	
42	Clip-on nut	4521574104E	

Position	Description	Part number	Serv. ind.
43	Temperature sensor with casing	4521144180E	
44	Condensate hose + pipe unions	4521598502	
45	Quick connector	4521574103E	
46	Retaining ring	4521574106E	
47	Control panel with GDD keypad	4522302834E	
48	Connecting cable for remote control	4522302833E	
49	Lower front cover	4521602302E	
50	Upper front cover	4521602301E	
51	Cover white	4521603564E	
52	Upper front panel white	4521603566E	
53	Upper left side panel white	4521583518E	
54	Upper right side panel white	4521613511	
55	Upper back panel white	4521603569E	
56	Lower front panel white	4521603572E	
57	Lower side panel white	4521583521E	
58	Lower back panel white	4521603573E	

* The article number corresponds to an alternative component, the original component is no longer available.

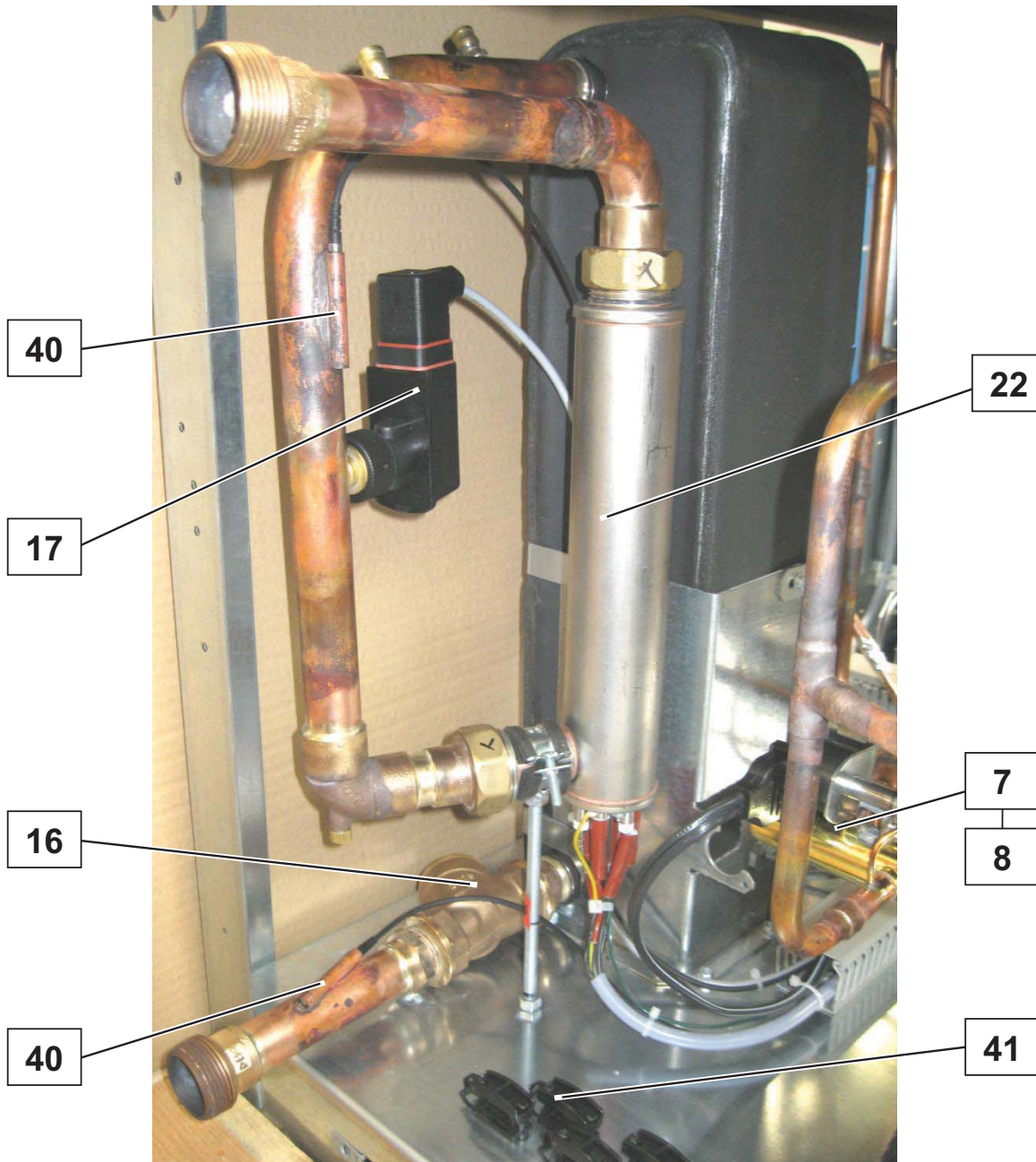
Note: The filter drier must always be exchanged when soldering work is carried out in the refrigerant circuit.



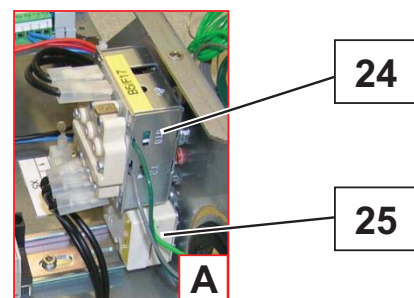
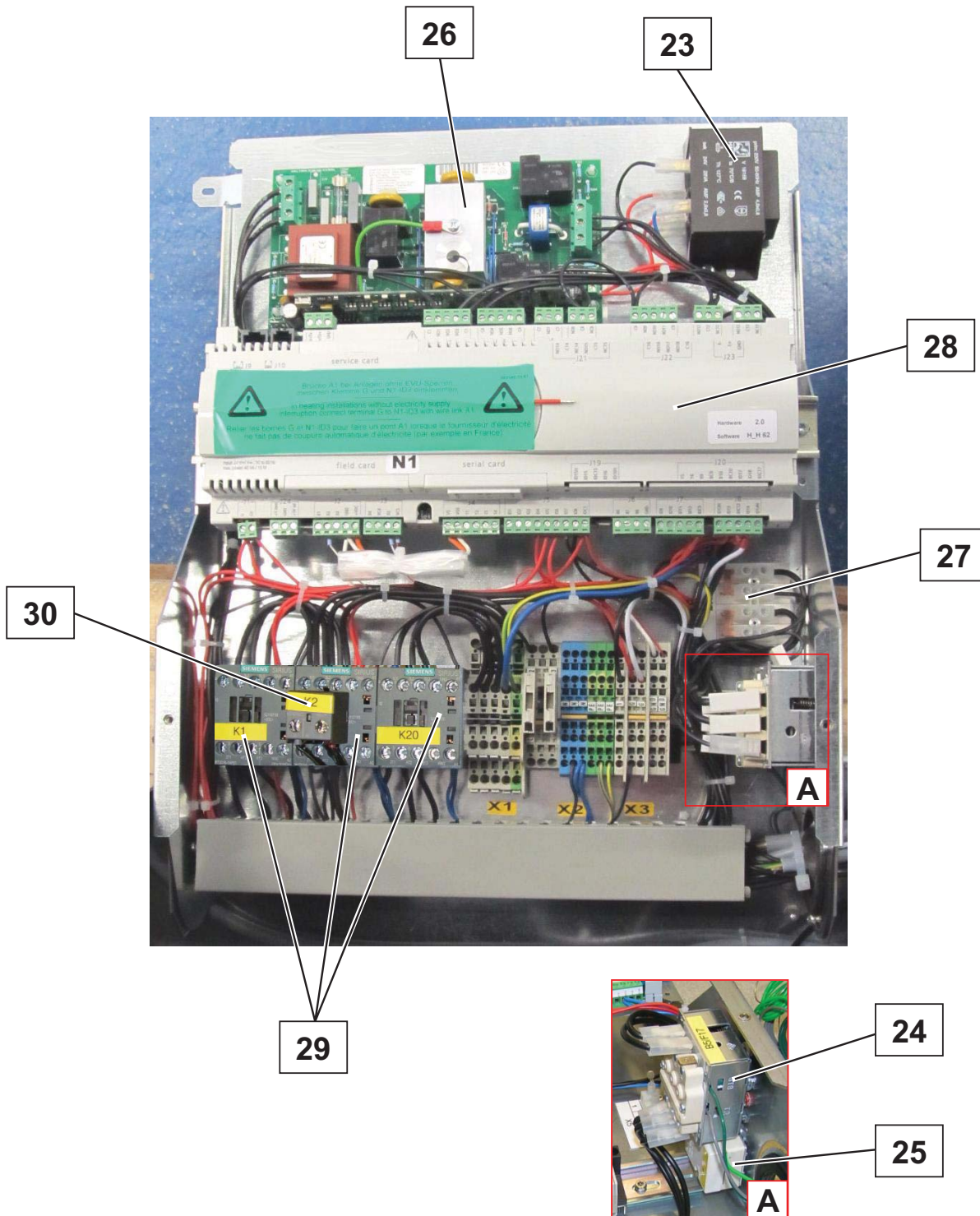
Images are intended for identifying the item in the spare parts list and may differ from the actual technical design.



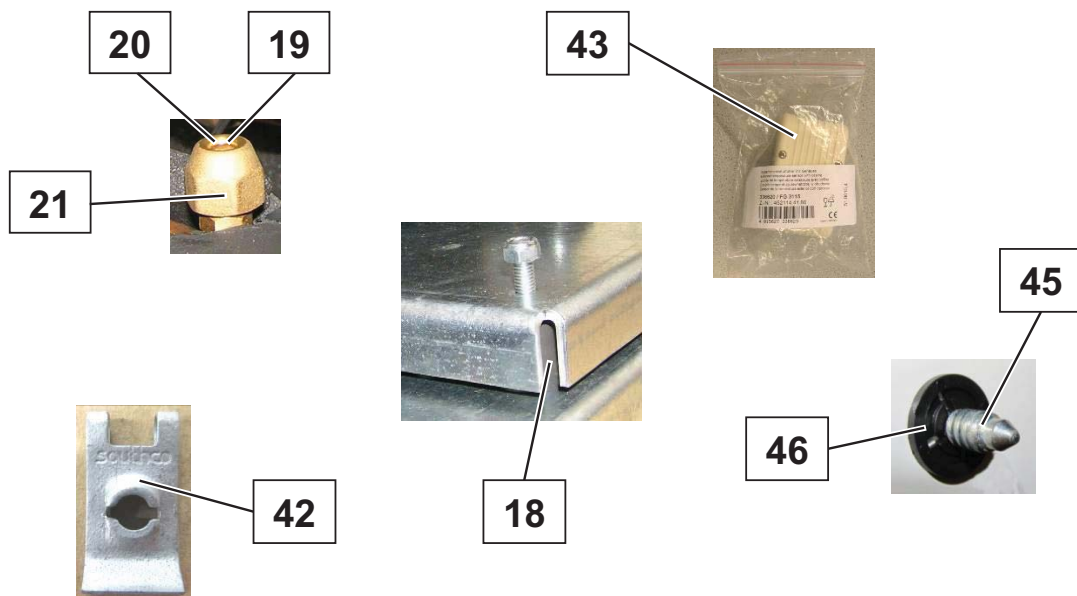
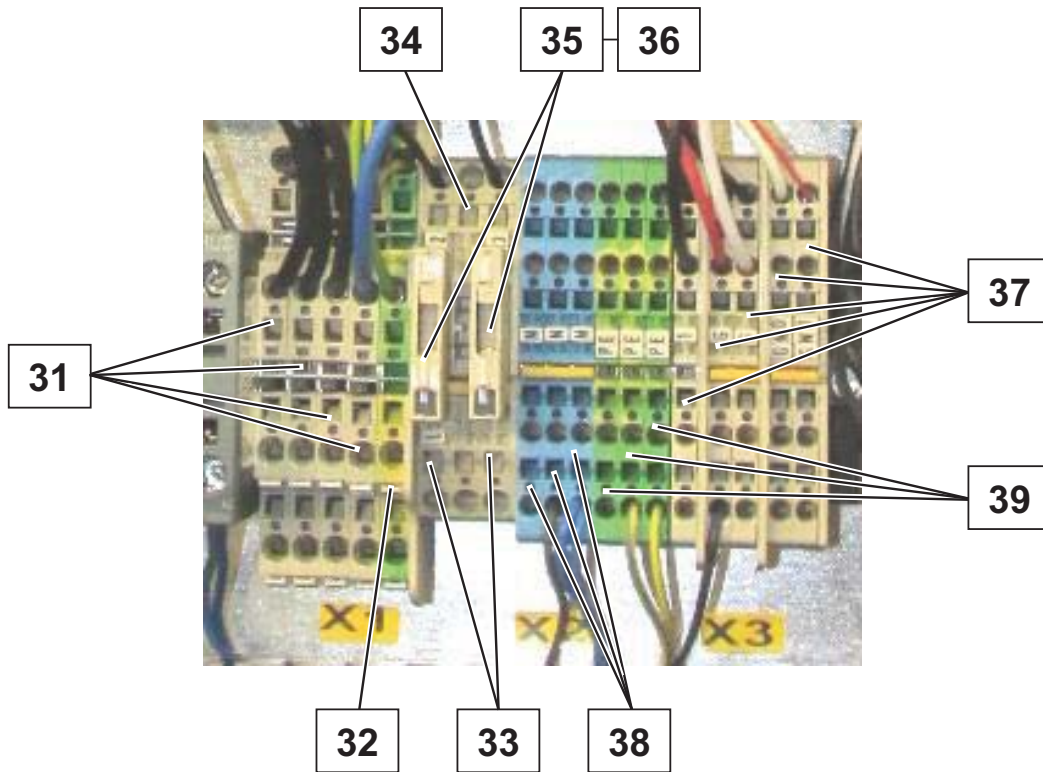
Images are intended for identifying the item in the spare parts list and may differ from the actual technical design.



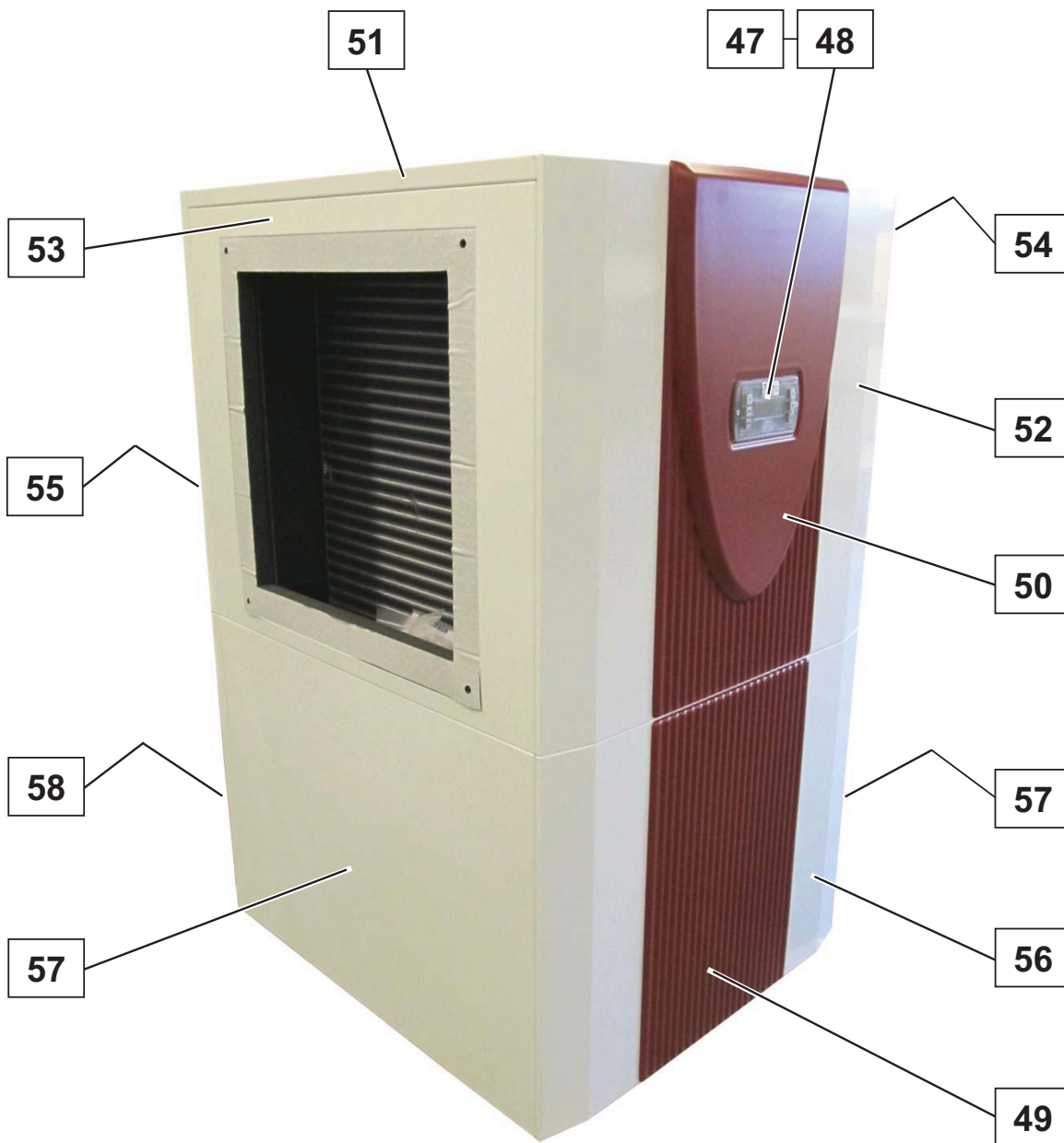
Images are intended for identifying the item in the spare parts list and may differ from the actual technical design.



Images are intended for identifying the item in the spare parts list and may differ from the actual technical design.



Images are intended for identifying the item in the spare parts list and may differ from the actual technical design.



Images are intended for identifying the item in the spare parts list and may differ from the actual technical design.